

# Android (Exchange 2013)

1. From the Home screen, touch 'Menu'



> Settings



> Add account > Microsoft<sup>®</sup> Exchange ActiveSync.

2. Enter your 'Email address' and 'Password'. Mark 'Send email from this account by default' (available only if you have already added another email account) to set this as the default email account and then touch 'Next'

< Add an Exchange account

Configure exchange account in a few steps.

Email Address

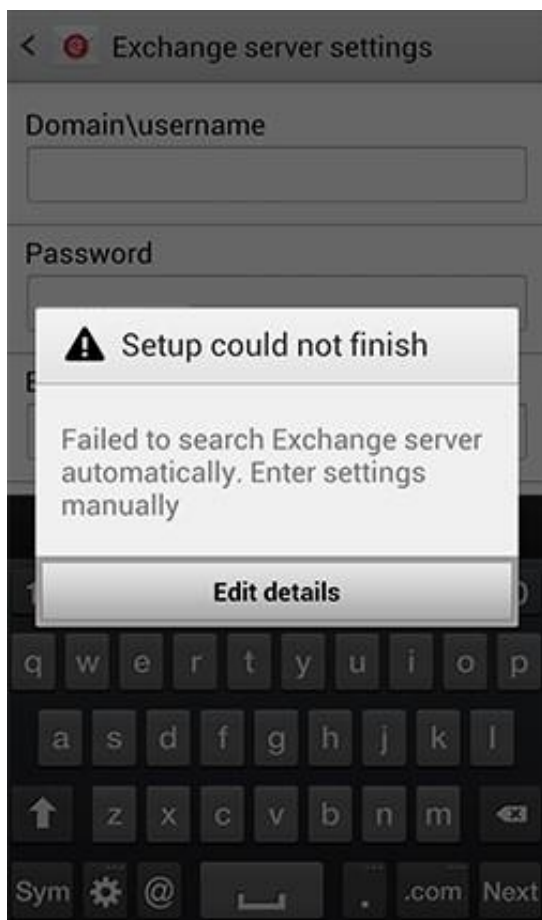
Password

☐ Show password

☒ Send email from this account by default

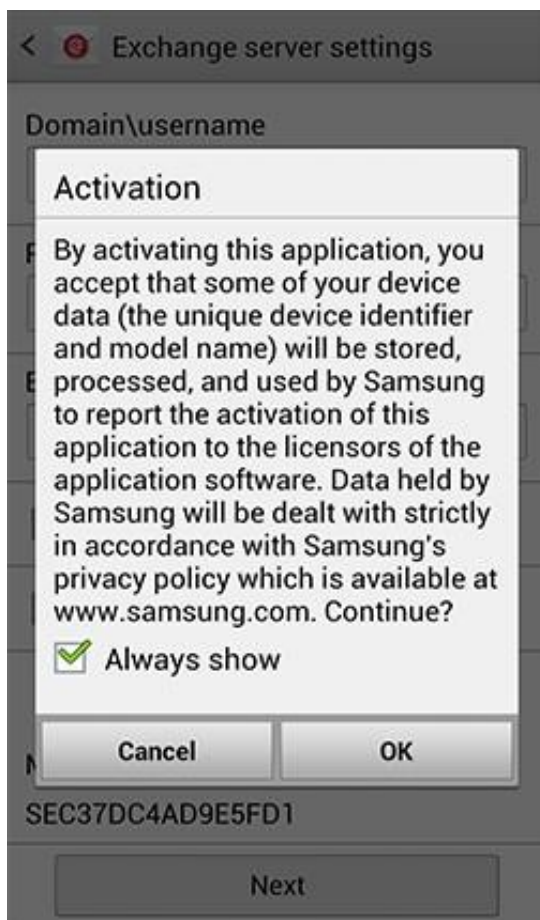
Manual setup Next

3. Your device will attempt to automatically find the additional details needed to set up your account. If it is unsuccessful, you will skip to Step 5. If it cannot automatically find the additional details needed, you will see the message 'Setup could not finish'. Touch 'Edit details' to enter the additional information manually



4. Verify the Exchange server settings are correct, and touch 'Next'

5. Review the Activation screen. Unmark the 'Always show' option if you do not want to see this message again when setting up an ActiveSync account, and touch 'OK'





6. The 'Account options' screen allows you to select the following ActiveSync options:

PLEASE NOTE: Options may vary depending on the type of account you are viewing.

- Peak schedule: Choose how often your device should connect to the Exchange server to get email during peak business hours. Choose Push to have email delivered to your device as soon as it arrives on the server.
- Off-peak schedule: Choose how often your device should connect to the Exchange server to get email during off-peak business hours. Choose Push to have email delivered to your device as soon as it arrives on the server.
- Period to sync email: Choose the time period your device should keep in sync.
- Emails retrieval size: Set an email size limit. Your device will download only the headers for emails that exceed this limit. When you open the message, you will be able to download the entire message.
- Period to sync Calendar: Choose the time period your device should keep in sync.
- Send email from this account by default: Mark this option to send all new email messages from this account by default.
- Notify me when email arrives: Mark this option to have your device notify you when you have new email messages.
- Sync email: Mark this option to synchronize your email to your device.
- Sync Contacts: Mark this option to synchronize your contacts to your device.
- Sync Calendar: Mark this option to synchronize your calendar to your device.
- Sync task: Mark this option to synchronize your tasks to your device.
- Automatically download attachments when connected to Wi-Fi: Mark this option to set your device to automatically download email attachments when you are connected to a Wi-Fi<sup>®</sup> access point

7. Scroll to the bottom and touch 'Next'

  Account options

---

Period to sync Calendar

2 weeks

---

☒ Send email from this account by default

---

☒ Notify me when email arrives

---

☒ Sync Email

---

☒ Sync Contacts

---

☒ Sync Calendar

---

☒ Sync Task

---

☐ Automatically download attachments when connected to Wi-Fi

---

Next

8. Enter a name for the account. This will help you easily identify this account if you add other email accounts to your device. Then touch 'Done'

 Set up email

---

Your account is set up, and email is on its way!

---

Give this account a name (Optional)

Sam Davidson Work

---

Done